

TECHNICAL SPECIFICATIONS

Flow Cell

Configuration: Bottom-to-top (B2T)
Material: Borosilicate
Internal Diameter (ID): 4.8 mm
Outer Diameter (OD): 5.0 mm
Volume: 1.4 mL
Flow Mode: Continuous or stopped flow
Flow Rate: <4.0 mL/min

Application Programming Interface

API Functionality: Setup/launch/monitor/
examine experiments,
instrument maintenance
Supported Interfaces: w .NET & JSON

NMReady Benchtop Spectrometers

Magnet: Permanent, rare earth,
cryogen-free
Frequency: 60 MHz (1.4 T)
Strayfield: <2 Gauss outside enclosure
Resolution: <1.0 Hz (16 ppb)
Weight: 55 lbs/25 kg

NMReady-60PRO


NMReady-60e



*technical specifications subject to change without notification



FOR
ONLINE DETECTION
by BENCHTOP NMR

 4-4500 5 St. NE
Calgary, AB, Canada
T2E 7C3

 1.855.NMReady

 sales@nanalysis.com

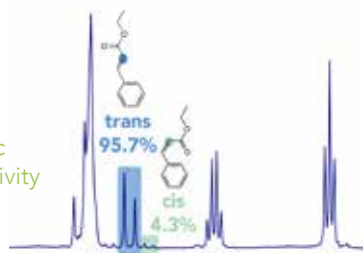
 @nanalysis

BENCHTOP NMR SPECTROMETER

for real-time, quantitative reaction monitoring

1 Why NMR Spectroscopy?

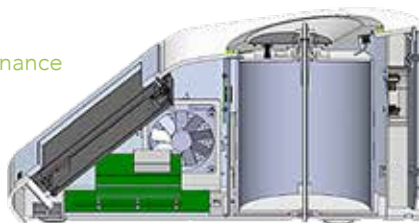
- ✓ quick
- ✓ non-destructive
- ✓ linear
- ✓ quantitative
- ✓ calibration-free
- ✓ chemically specific
- ✓ structural connectivity (e.g., isomers)



2 Why benchtop NMR?

The cylindrical halbach shape readily accommodates a flow cell.

- ✓ Low maintenance
- ✓ Compact
- ✓ Affordable
- ✓ Versatile



3 Which benchtop NMR?

The NMRReady-60e and the NMRReady-60PRO can be easily paired with the flow accessory. Choose the spectrometer model based on which nuclei you wish to monitor (e.g., ^1H , ^7Li , ^{11}B , ^{19}F , ^{31}P , etc.).

Please inquire for more information!

FLOW CELL

for fast and easy data acquisition

1 Why online NMR?

- ▶ Gain information directly on the process in real-time
- ▶ Observe & identify intermediates and/or byproducts
- ▶ Optimize reactions/yields more efficiently
- ▶ Reduce irregularities between batch reactions
- ▶ Increase safety
- ▶ Minimize sampling errors & save time

2 Why NMRReady-flow?

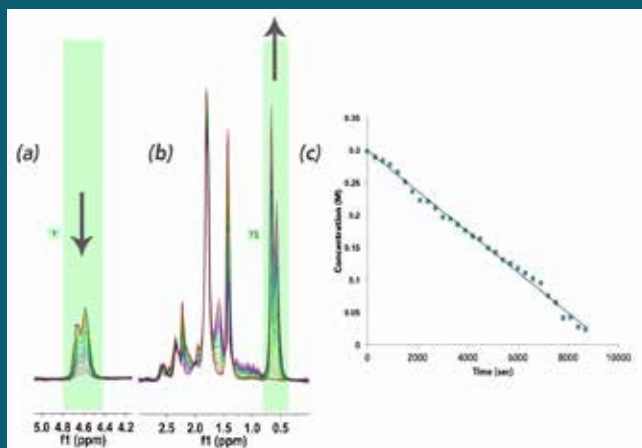
- ▶ Easy-to-use
- ▶ Quick exchange between flow cell and standard 5 mm NMR tubes
- ▶ Small sampling volume
- ▶ High SNR
- ▶ Fast data collection



3 Flexibility

Please inquire about options for

- ▶ Increased thermal stability & temperature control
- ▶ Different cell geometries



OPEN SOFTWARE INTERFACE

for easy integration into any laboratory

1 Simple Acquisition

Onboard data acquisition or NMRReady-CONNECT, the applications programmatic interface (API) allows multi-spectral acquires over a specified time interval.



2 Simple Data Processing

NMR spectra can be integrated directly into a workflow. The technique requires little or no calibration, so can be immediately used to optimize a reaction, identify byproducts and determine reaction kinetics with minimal data processing required.

Automated processing can be performed automatically with the API or with 3rd party software

3 Connectivity

The NMRReady is a modern instrument; easily integrated into workflow through Ethernet and Wi-Fi connections.