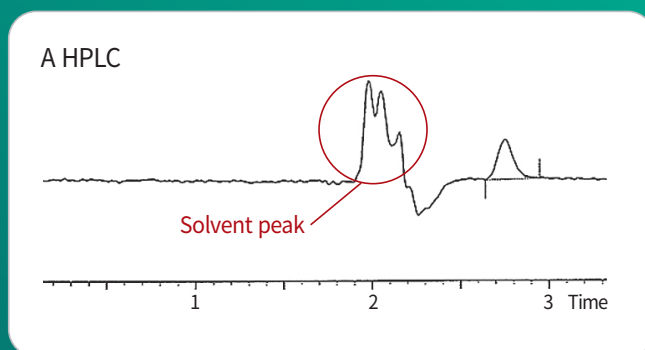
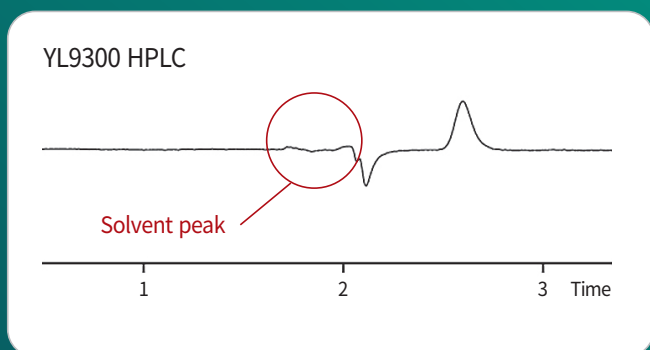


YL9300 HPLC High Performance Liquid Chromatograph

YL9300 HPLC is an integrated HPLC system in a compact design including a vacuum degasser (mixer), quaternary pump and UV/Vis detector at a competitive price. The focus corrected optical design efficiently reduces mobile phase RI effect and provides enhanced baseline stability with a substantially minimized noise level especially in short wavelength range, which brings decreased solvent related peaks.



[Comparison of a solvent peak influence]



Compact Design

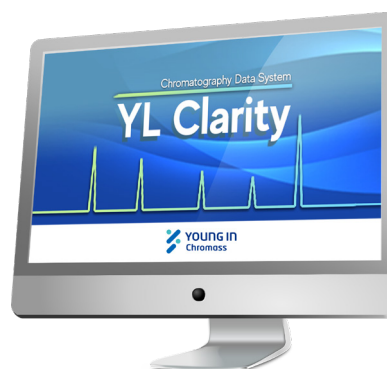
- Integrated LPG(Low Pressure Gradient) HPLC system
- Simple maintenance : Pump & Vacuum Degasser modules in a sliding drawer

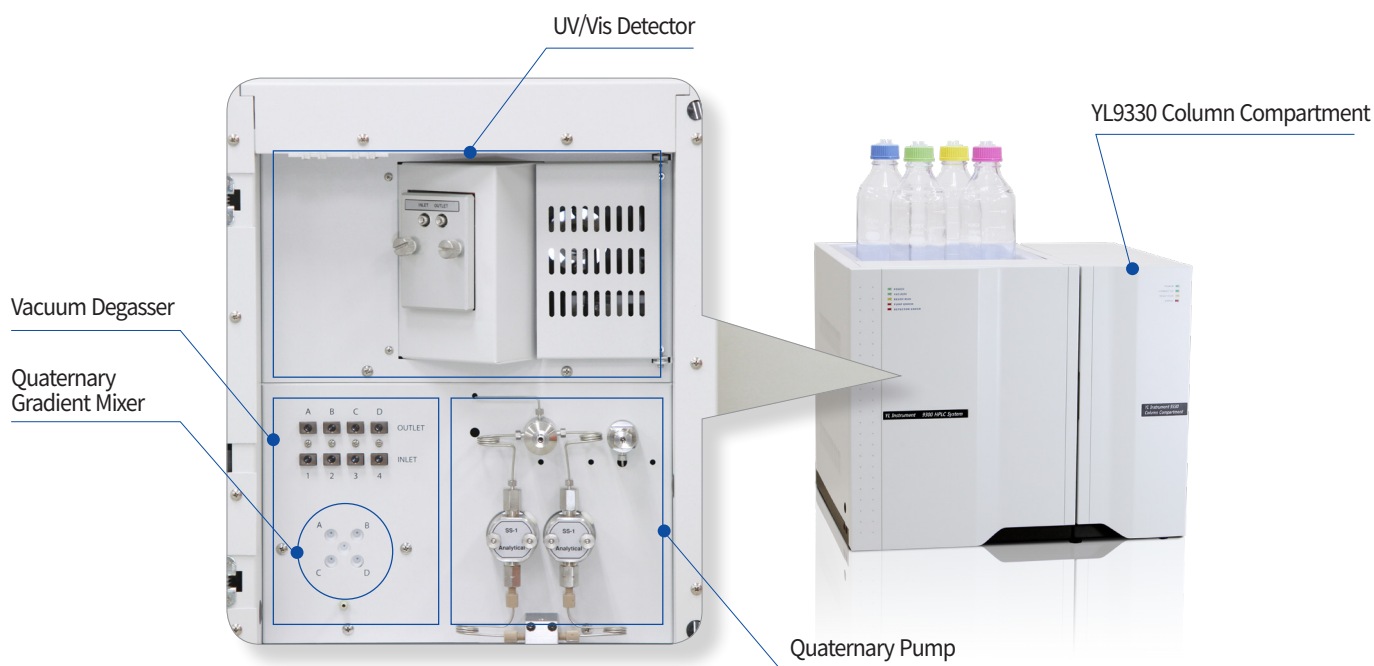
Perfect Performance

- Increased mobile phase composition efficiency
- Decreased solvent peak influence
- Narrow spectral bandwidth
- Substantially stabilized baseline with minimized noise level

Impact to Competitors

- Competitive or even lower price than others
- High speed data process by network (LAN) communication
- Low maintenance cost





Vacuum Degasser

- Number of channel : 4 CHs
- Maximum flow rate : 10 ml/min per channel
- Internal volume per channel : 925 ul per channel
- Solvent contact materials : Teflon AF, PEEK and Glass-filled PTFE

Quaternary Pump

- Flow range : 0.001-10 ml/min
- Flow rate accuracy : $\leq \pm 1\%$ at 1 ml/min
- Flow rate precision : $< 0.1\%$ RSD at 1 ml/min
- Number of eluent lines : 4
- Pressure pulsation : $\leq \pm 0.5\%$ at 1 ml/min

UV/VIS Detector

- Wavelength range : 190-600 nm (Standard) /190-900 nm (Option)
- Spectral bandwidth : 5 nm
- Wavelength accuracy : ± 1 nm
- Wavelength precision : ± 0.1 nm
- Linearity : $> 99.5\%$ at 2.5 AU (Acetone, 254 nm)
- Noise level : $< \pm 0.35 \times 10^{-5}$ AU, 254 nm, dry cell
- Drift : $< 1 \times 10^{-4}$ AU/hour

System Information

- Data communications : LAN
- Dimension : 375 X 470 X 545 mm (W X H X D)
- Weight : 27 Kg
- Safety & maintenance : Leak detection, Diagnostics, Error detection
- Power consumption : 150 W

YL9330 Column Compartment

- Temperature range : 4°C (Cooling)-90 °C
- Temperature stability : $\pm 0.05^\circ\text{C}$
- Temperature accuracy : $\pm 0.5^\circ\text{C}$, with 2-point temp. calibration
- Temperature programs : 40 Steps
- Column capacity : three columns up to 300 mm length
(max OD : up to 18 mm)

Column switching (Option) : automatically 6-port SS(PEEK) valve up to 2 ea

- Communications : LAN
- Safety & maintenance : Leak detection, Diagnostics, Error detection
- Dimensions : 185 x 476 x 480 mm (W x H x D)
- Line voltage : 100-240 VAC, $\pm 10\%$, automatic voltage selection
- Line frequency : 50/60Hz, $\pm 5\%$
- Power consumption : 150 W