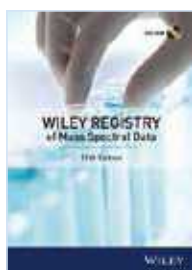
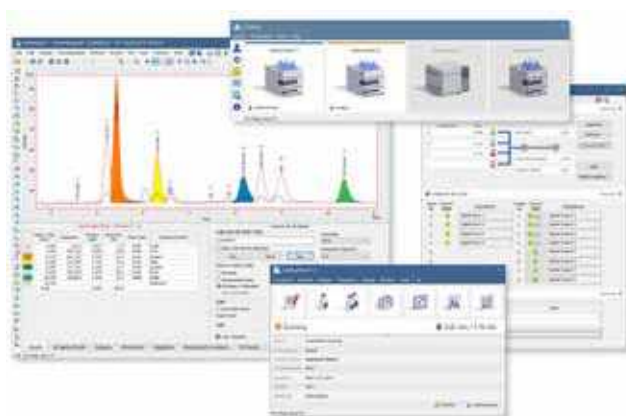


# Powerful Control by YL-Clarity Software

## YL-Clarity

YL-Clarity is a powerful and intuitive software which offers easy control of the mass spectrometers and supports the full compatibility with Wiley and NIST mass spectral library automatically to identify and name compounds. The software allows the MS to be run on scan mode and SIM mode simultaneously in one chromatographic analysis.



## GC/MS Library: Wiley

The Wiley Registry of Mass Spectral Data, now in its 11th edition, is the most comprehensive spectral library available. Identification of unknowns begins with untargeted analysis and this library provides researchers with the most assurance that their untargeted spectral search is the broadest available. Wiley's broad and field-tested spectral libraries save time, increase instrument efficiency and boosts staff productivity.



## GC/MS Library: NIST

NIST 2017 is the most compatible available, containing multiple instrument formats. Including NIST MS search, it's made up of three libraries, an Electron Ionization (EI) mass spectral library, a MS/MS library, and a GC Retention Index library.

GC - MS Data		
Library	Wiley Registry 11 <sup>th</sup> Edition	NIST 2017
Spectra	775,550	306,622
Chemical Structures	741,000	262,157
Compounds	599,700	262,157

## Easy and Intuitive Tune Software

The easy-to-use automatic tune enhances sensitivity, stability and reproducibility of MS results, which means it makes sure of achieving lower detection limits for trace-level compounds. A manual tune for customization supports to change tune setting values to achieve higher levels of sensitivity required by certain specific analysis.

