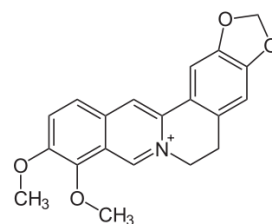


## Berberine in Coptis

### 1. Analytical Condition



#### YL9100 HPLC System

이동상 ; ACN 50 : UP water 50(Sodium Lauryl Sulfate 1.7 g +  $\text{KH}_2\text{PO}_4$  3.4 g)

컬럼 ; Sunfire C18 4.6 \* 150 mm, 5  $\mu\text{m}$ (Waters., US)

검출기 ; UV/Vis 345 nm

온도 ; 30°C

주입량 ; 20  $\mu\text{L}$

### 2. Chromatogram

