

Ginkgo Biloba Leaf Extract Analysis

1. Analytical Condition

YL9100 HPLC

Mobile Phase : Water, MeOH

Flow Rate : 1.0ml/min

Column Oven : 30°C

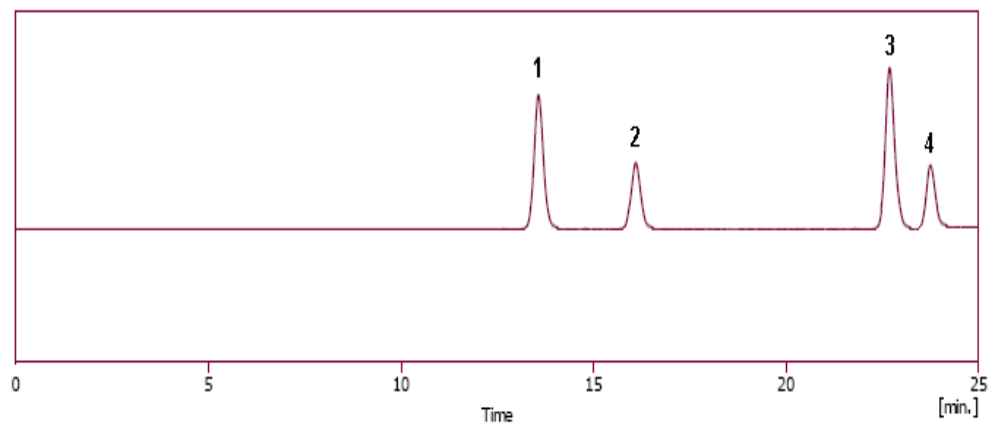
Detector : ELSD 55°C, 1.5L/min

Column : C18 (4.6*250mm, 5um)

Injection Volume : 15ul

| Gradient Program | Water | MeOH |
|------------------|-------|------|
| Initial | 75 | 25 |
| 23.00 | 52 | 48 |
| 30.00 | 25 | 75 |
| 35.00 | 10 | 90 |
| 40.00 | 75 | 25 |
| 50.00 | 75 | 25 |

2. Chromatogram



1. Bilobalide
2. Ginkgolide C
3. Ginkgolide A
4. Ginkgolide B

