

# Salicylic acid Analysis in Raw materials for Cosmetics

## 1. Analytical Condition

### YL 9100 Series HPLC

Mobile Phase : Water : ACN = 80:20 (add H<sub>3</sub>PO<sub>4</sub> 0.1%)

Flow Rate : 1.0ml/min

Column Oven : 35°C

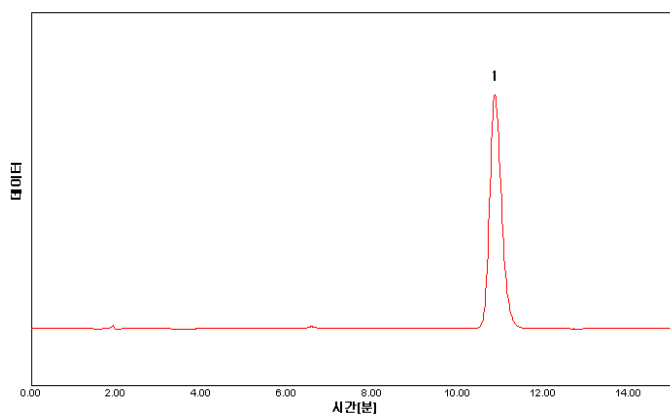
Detector : UV/Vis Detector-254nm

Column : Capcell pak MF C8 (4.6\*150mm, 5um)

Injection Volumn : 20ul sample loop

## 2. Chromatogram

Standard



1. Salicylic acid

Sample

