

Sun block Analysis in Raw materials for Cosmetics

1. Analytical Condition

YL9100 HPLC

Mobile Phase : EtOH, Water

Flow Rate : 1.0ml/min

Column Oven : 25°C

Detector : UV/Vis 310nm

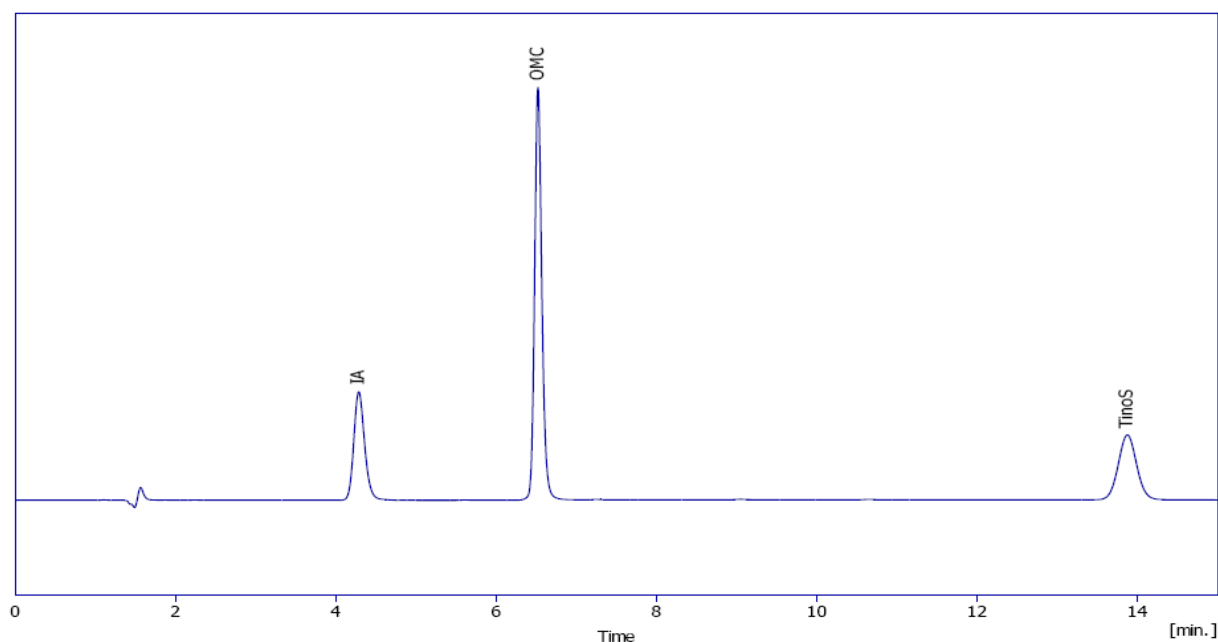
Column : C18 (4.6*150mm, 5um)

Injection Volume : 10ul

<Gradient Program>

Time(min)	EtOH	Water
Initial	75	25
2	75	25
3.5	90	10
5.5	100	0
13	100	0

2. Chromatogram



1. Isoamyl-p-methoxycinnamate(IA)

2. Octylmethoxycinnamate(OMC)

3. Bis-ethyl hexyl oxyphenol methoxyphenyl triazine(Tinosorb S)

