

## 「Application Note」

# Analysis of Toluene, Ethylbenzene, Xylene by ChroZen GC

- GC Application

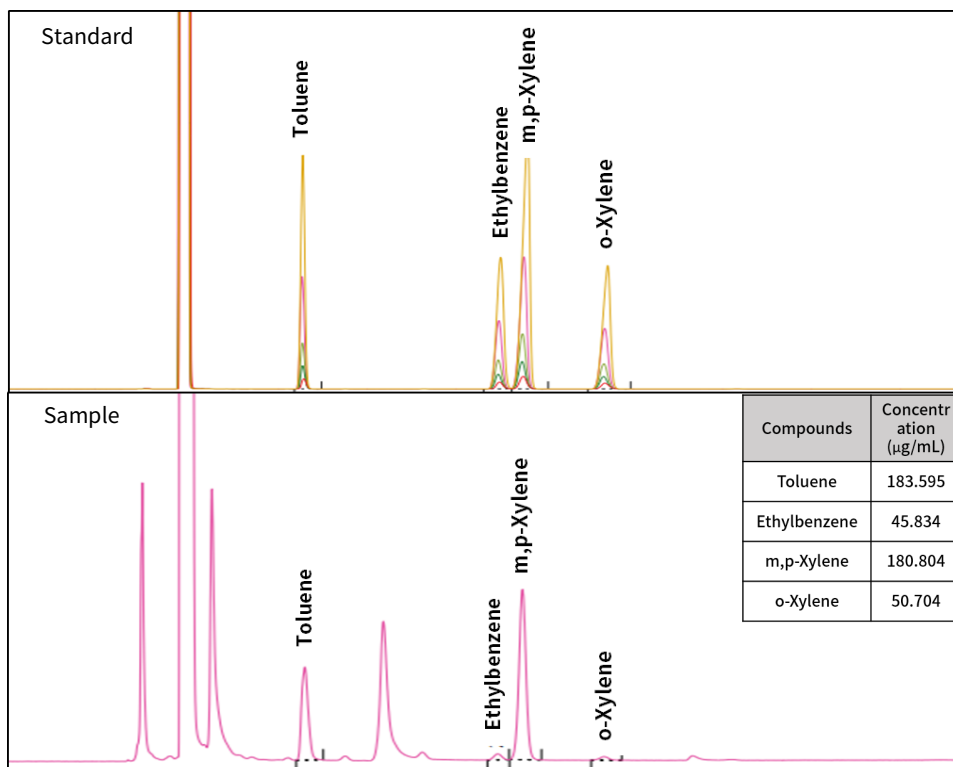


**YOUNG IN**  
Chromass

## Analytical Conditions

Column : HP-5, 30 m x 0.32 mm x 0.25  $\mu$ m  
Oven : 60°C(5 min) , 40°C/min, 300°C(14 min)  
Carrier Gas : N<sub>2</sub>  
Flow Rate : 3 mL/min (20:1)  
Injector : Capillary, 280°C  
Detector : FID, 300°C  
Injection Vol. : 1  $\mu$ L

## Results



## Calibration Curves

5 points – 25, 50, 100, 250, 500 µg/mL

