

「Application Note」

Analysis of Siloxane by ChroZen GC

- GC/MS Application



Analytical Conditions

GC Conditions

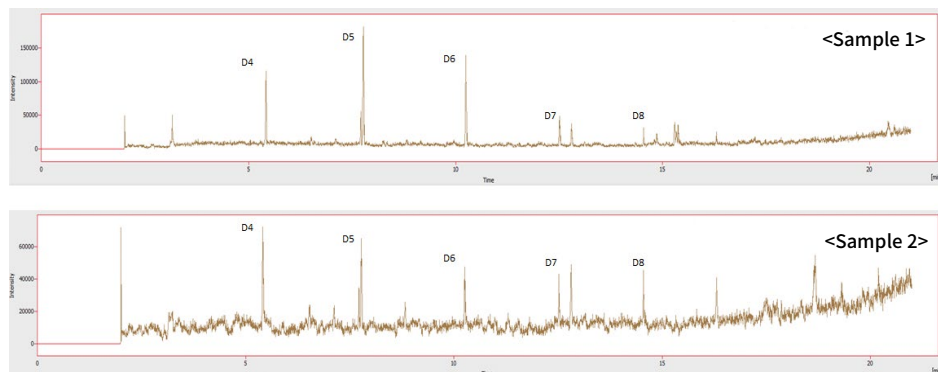
Column : DB-5, 30 m x 0.25 mm x 0.25 μ m
Oven : 40 °C (5 min), 20 °C/min, 350 °C (10 min)
Carrier Gas : He
Flow Rate : 1 mL/min
Inlet : Capillary, Split, 1:30

MS Conditions

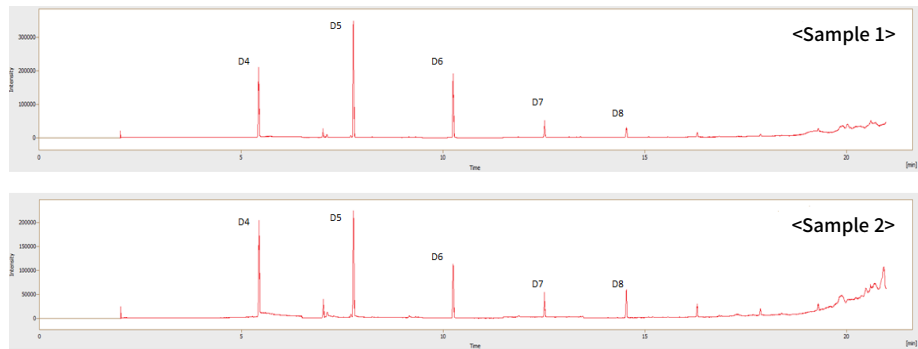
Ion Source Temp. : 200 °C
Transfer-line Temp. : 250 °C
Range of Scan Mode : 50 – 650 m/z
SIM Mode : 281, 355, 341 m/z

Results

Chromatogram_Full scan mode



Chromatogram_SIM mode



Library Search

RT	Library	R. Match	Formula	MW	CAS No.
5.410	Cyclotetrasiloxane, octamethyl-	839	C ₈ H ₂₄ O ₄ Si ₄	296	556-67-2
7.773	Cyclopentasiloxane, decamethyl-	796	C ₈ H ₃₀ O ₅ Si ₅	370	541-02-6
10.244	Cyclohexasiloxane, dodecamethyl-	852	C ₁₂ H ₃₆ O ₆ Si ₆	444	540-97-6
12.512	Cycloheptasiloxane, tetradecamethyl-	740	C ₁₄ H ₄₂ O ₇ Si ₇	518	107-50-6
14.539	Cyclooctasiloxane, hexadecamethyl-	627	C ₁₆ H ₄₈ O ₈ Si ₈	592	556-68-3