

「Application Note」

Analysis of Essential Oils by ChroZen GC

- GC/MS Application



Analytical Conditions

GC Conditions

Column : DB-5

Oven : 40 °C (5 min), 20 °C/min, 350 °C (10 min)

Carrier Gas : He

Flow Rate : 1 mL/min

Inlet : Capillary, Split, 1:30

MS Conditions

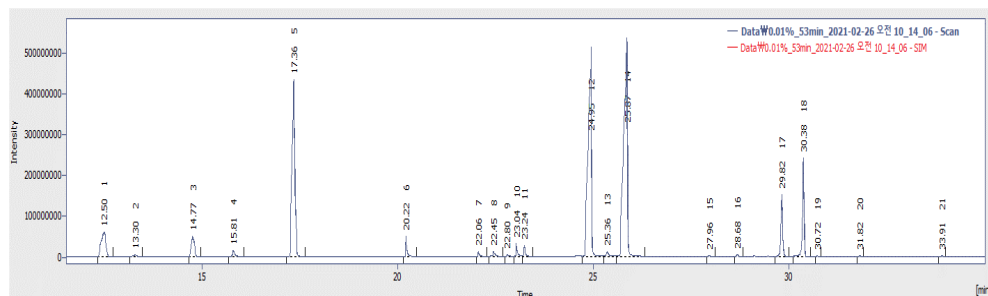
Ion Source Temp. : 200 °C

Transfer-line Temp. : 250 °C

Range of Scan Mode : 50 – 350 m/z

Results

Chromatogram



Library Search

RT	Library	R. Match	Formula	MW	CAS No.
17.358	D-Limonene	927	C ₁₀ H ₁₆	136	5989-27-5
	<p>— 17.358 min (MSDetector 1) — D-Limonene</p>				
24.951	Neral	855	C ₁₀ H ₁₆ O	152	106-26-3
	<p>— 24.951 min (MSDetector 1) — Neral</p>				
25.868	Citral	852	C ₁₀ H ₁₆ O	152	5392-40-5
	<p>— 25.868 min (MSDetector 1) — Citral</p>				