

## Pesticide Residue 10mix Analysis

### 1. Analytical condition

#### YL 6500 Series

Oven : 170°C (for 2 min)- temp-programed 10 °C/min-280 °C(for 5 min)

Column : HP-5 (30m\*0.32mm\*1.0um)

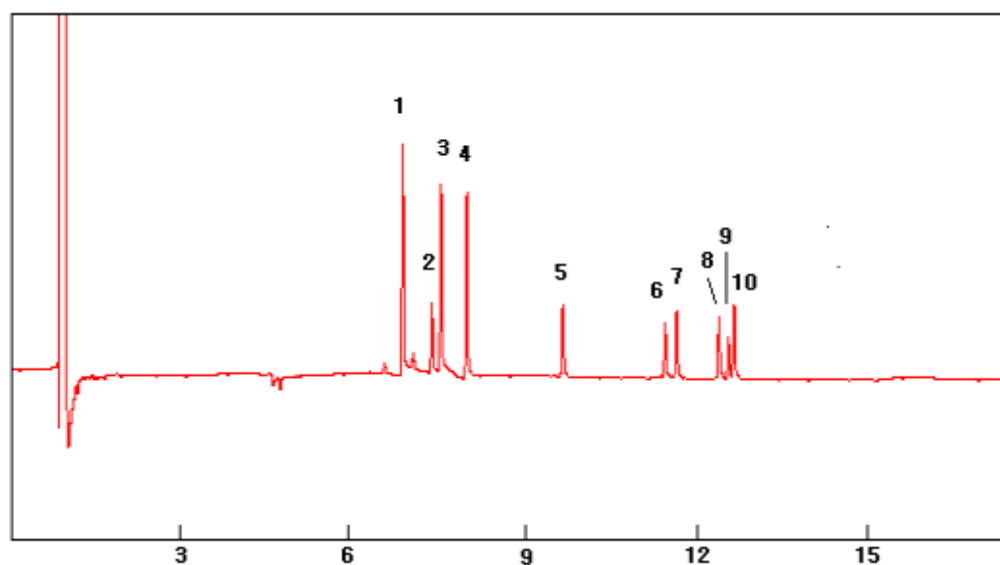
Carrier gas : He, 3.0 ml/min (Split ratio 7:1)

Injector : Capillary 330°C

Detector : PDD-ECD mode 330°C

Pesticide residue 10 species

### 2. Chromatogram



1.  $\alpha$ -BHC
2.  $\beta$ -BHC
3.  $\gamma$ -BHC
4.  $\delta$ -BHC
5. Aldrin
6. DDE
7. Dieldrin
8. Endrin
9. DDD
10. DDT

