

# Pesticide Residue 10mix

## 1. Analytical Condition

### YL 6100 Series

Oven : 150°C (0.1 min)-10 °C/min-280 °C(5 min)

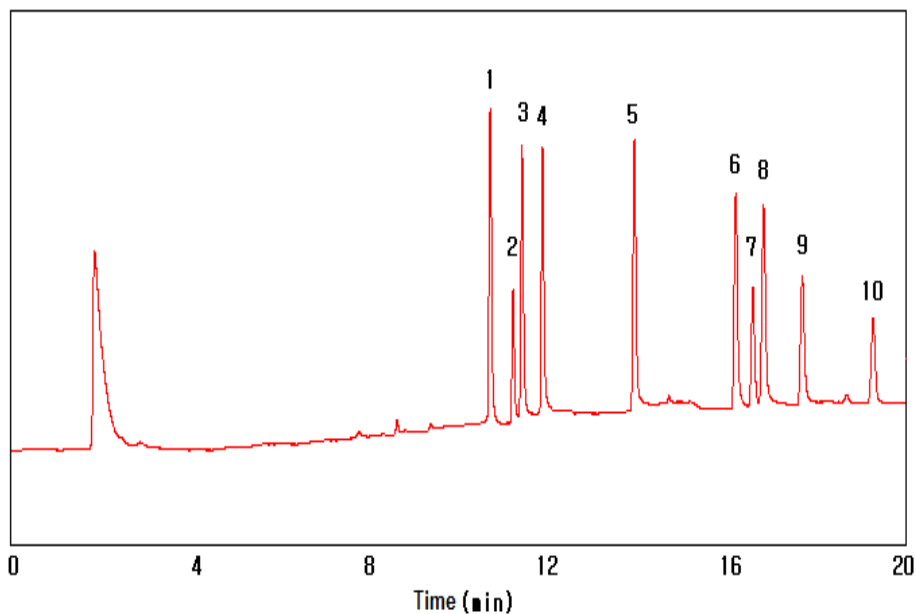
Column : DB-5 (30m\*0.25mm\*0.25um)

Carrier gas : N<sub>2</sub>, .1 ml/min (Split ratio 10:1)

Injector : Capillary 330°C

Detector : ECD 330°C (Mk 45, C=2.3)

## 2. Chromatogram



1.  $\alpha$ -BHC
2.  $\beta$ -BHC
3.  $\gamma$ -BHC
4.  $\delta$ -BHC
5. Aldrin
6. DDE
7. Dieldrin
8. DDD
9. Endrin
10. pp-DDT