

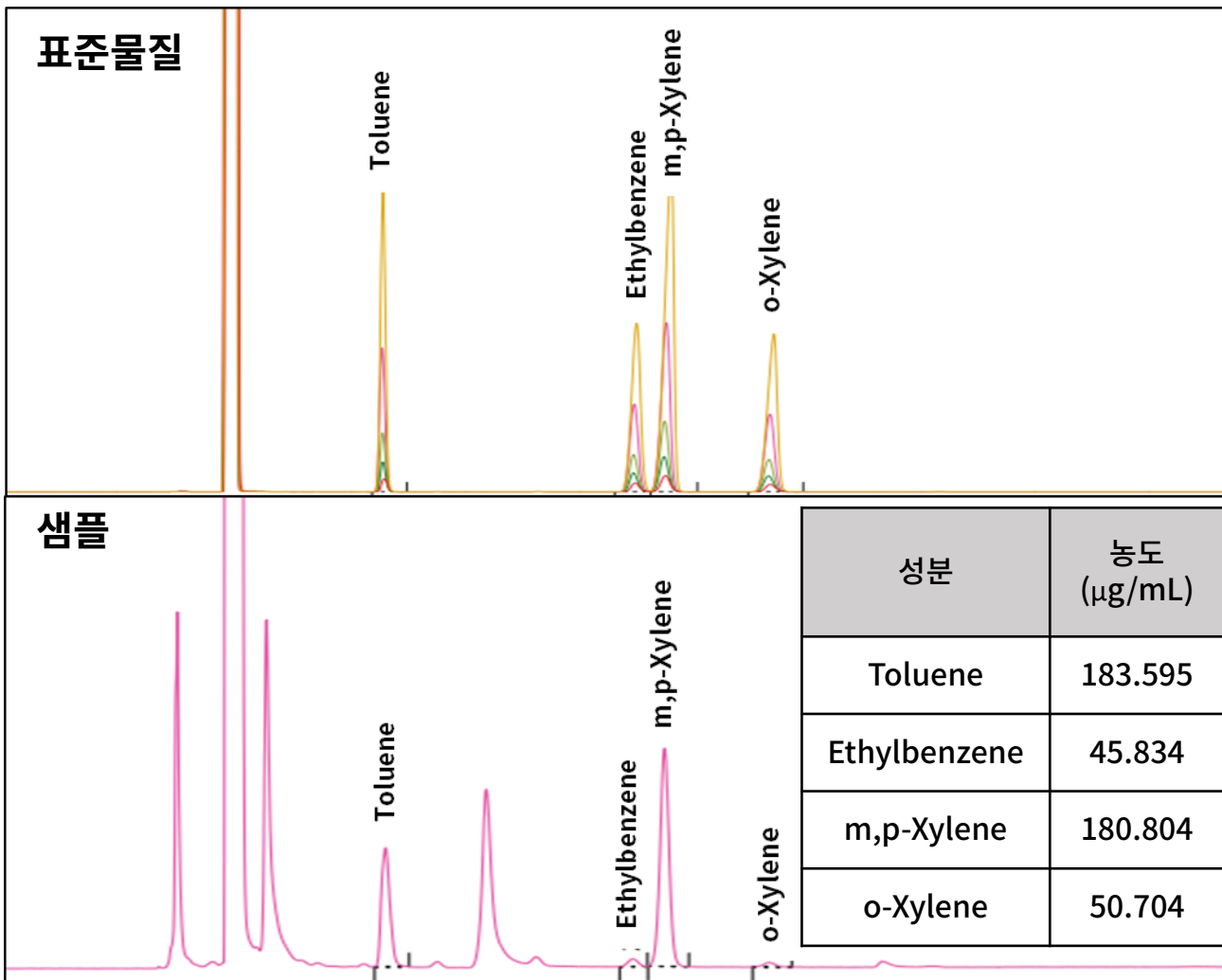
반응물 중 Toluene, Ethylbenzene, Xylene 분석

분석조건

Column : HP-5 30 m x 0.32 mm x 0.25 μ m
 Oven : 60°C(5min) -> 40 °C/min -> 300 °C(14 min)
 Carrier gas : N2
 flow : 3 mL/min (20:1)
 Injector : Capillary, 280
 Detector : FID, 300
 Injection vol. : 1 μ L

분석결과

<Chromatogram>



<Calibration curve> 5 point – 25, 50, 100, 250, 500 µg/mL

